

KINGSCLIFF HIGH SCHOOL



ACHIEVEMENT THROUGH ENDEAVOUR

NEW SOUTH WALES RECORD OF SCHOOL ACHIEVEMENT (RoSA)

ASSESSMENT POLICY

YEAR 10 2022

Principal
Deputy Principal (Year 10):
Year 10 Adviser:

Mr M Hensley
Mr D Matthias
Ms N Hejduk

School Philosophy

Kingscliff High School has established a reputation for outstanding achievement in all areas of school life. The school enjoys an enviable reputation in the local and wider community. The school's motto, "**Achievement through Endeavour**" provides the philosophy upon which all areas of our school life are based.

The School endeavours to set the highest standards for our students in all areas. This is reflected in the policies under which we operate.

- programs in sport, the creative and performing arts and community service.
- All students are assisted and encouraged to acquire skills, knowledge and positive attitudes, enabling each individual to achieve to his/her own highest potential.
- Kingscliff High School is a "uniform" school with a strong commitment to dress code.
- The School is proud of our extensive program of student care and welfare. This centres on things such as our Head Teacher Welfare, an active Welfare Team, Year Advisers, School Counsellor and a range of programs for students with specific needs.
- We have a commitment to physical fitness. Sport is compulsory in Year 10 and students are expected to participate fully in school sporting carnivals.
- The school's extra curricular activities are seen as a valuable and rewarding part of the curriculum.
- The School provides excellent facilities and opportunities for all practical subjects along with innovative programs in Science, Technology, Engineering and Maths (STEM) and information technology and communication.
- The school offers many co-curricular activities and programs aimed at developing high levels of maturity and leadership amongst all students.

"Achievement through Endeavour"

General Information for Year 10

1. Merely attending will not gain you a NSW Record of School Achievement (RoSA).
2. **A NSW Record Of School Achievement can only be earned through “sustained diligence and effort” from the student.** You are expected to attend classes and work to the best of your ability.
3. You must satisfactorily complete all mandatory courses to gain a RoSA. The mandatory courses are:
 - English
 - Mathematics
 - Science
 - Australian History
 - Australian Geography
 - Personal Development, Health and Physical Education (PDHPE)
4. One assessment task may be used to measure a variety of outcomes.
5. Satisfactory completion will be determined by looking at your effort and results in class work, assignments and examinations.
6. If you miss lessons **it is your responsibility** to find out if any information about assessment tasks was given out during the period of absence in addition to catching up any missed work. In cases of prolonged absence you should request that school work be sent home for you to complete.
7. If you don't understand what is required of you in any assessment task or tasks **it is your responsibility** to seek help from your class teacher, the Head Teacher, your Student Adviser or the Deputy Principal for Year 10.
8. You will need to attend each lesson and complete all class work. The school may refuse to grant a RoSA to a student whose attendance or application at school has been unsatisfactory.

It is your responsibility to carefully read and understand this information.

IMPORTANT message to Parents and Students

FAMILY HOLIDAYS and other non-school approved business are not valid reasons to miss or not undertake assessment tasks at the correct time.

This applies to the Year 10 RoSA, Year 11 RoSA and HSC courses.

Assessment tasks can be scheduled at various times throughout the school terms so it is strongly advised to take holidays and other business that may affect your child's attendance during school vacations.

Literacy and numeracy tests

If you are in Year 10 this year and have told your school you want to leave, you will have the choice to sit for literacy and numeracy testing in November 2022.

- The tests will be offered online and will be taken at your school under the supervision of a teacher. The tests are a useful option if you are looking for jobs where the employer wants to see evidence of a level of literacy and numeracy.
- Each test will be of 60 minutes duration, and the two tests will be completed in one sitting.
- These will not be pass/fail tests – they will be designed to show levels of achievement that are reasonable to expect from students leaving school after the end of Year 10.
- The tests will be offered in schools during a number of ‘windows’ each year. You will only be able to sit for the tests once during each window but, if you later decide to stay at school longer, you will be able to take the tests again.
- The literacy and numeracy test results will be reported separately from the RoSA credential.
- More information on the voluntary online literacy and numeracy tests will be available later in 2022.

Change of Address or Circumstances

Please notify the School **immediately** of your new circumstances and/or address, phone number and emergency contact. The front office must be notified in writing. If you fail to do this mail goes astray, parents cannot be contacted when students become sick or have an accident and certificates such as the record of achievement may be sent to the wrong address. This is also important if you change your name or now use a different name on official documents.

Attendance

Students must attend all programmed lessons. Rolls are marked every period.

- Students must arrive before 8:45am for roll call and must be on time for all scheduled lessons.
- Students may not leave the school during the day unless they bring a signed request from their parent/guardian and have it endorsed by the Head Teacher Administration. This is only available for emergency or other unexpected circumstances.
- Students who truant for any period may have to make up lost time at **recess or after school detention**.
- Students may be given after school detentions to complete Assessment Tasks if the student fails to submit a task by the due date.

Lateness

Students who arrive late for school - either in the morning or from lunch must report to the office, with a signed note of explanation. The school will contact parents in the case of repeated and unexplained lateness. Students without a late note will not be admitted to class.

Out of Class

Students must be in possession of an official note to be out of class. These notes can only be issued by the front office or the class teacher.

Out of School

Notes from parents for passes out of the school, for Doctor or other essential needs, are taken to one of the Head Teachers Administration at the beginning of the day for signing. They are then taken to the front office to obtain a pass. Students must sign out and back in if they return at the front office. Every effort should be made to make appointments out of school hours.

Sport is a mandatory requirement from all students and failure to participate to a satisfactory standard will mean the student does not receive a RoSA. Please refrain from making appointments in Sport time for this reason.

Use of Technology

When a student wishes to hand in work done on non-school computers it is the student's responsibility to ensure it is compatible with the equipment currently available within the school. Students should also supply the teacher with a printed copy of the task (unless other provisions have been made by the teacher). Equipment failure, hardware or software incompatibility or failure of school equipment to read a disc is the student's responsibility and the student will be deemed not to have handed in the task on time if this occurs.

School Calendar

All parents/students should refer to the Kingscliff High school calendar

<https://kingscliff-h.sentral.com.au/webcal/calendar/1>

Dates of examinations, P&C meetings, sporting fixtures and others are included in the school diary. Parents and students can anticipate and prepare for the coming events by consulting this calendar. Please note to always check this online school calendar for any last minute updates.

Study timetable

It is also recommended that all Year 10 students use a study/revision/homework/assessment task timetable and use it to organise their time efficiently.

Parent-Teacher Functions

Structured interviews follow the issue of Half Yearly Reports. Meeting times are scheduled with teachers for each of the courses taken by the student. These meetings are arranged to enable parents to meet teachers, to discuss student progress and attitude, give information and to indicate problems that the students may have.

Newsletter

A school newsletter is produced every second week and can be found on the school's website:

<https://kingscliff-h.schools.nsw.gov.au/> The newsletter is also emailed to parents. If you are not receiving the newsletter by email, please update your email address with the Front Office staff. The newsletter is an important avenue for communicating a wide range of education, cultural, sporting and social activities. It often contains details/dates of important, coming events, scholarships and traineeship opportunities.

YEAR 10 EXAMINATION RULES

ENTRY INTO EXAM VENUE	<ul style="list-style-type: none"> Should be in class groups as instructed by teachers
LATE ARRIVAL	<ul style="list-style-type: none"> Students should be on time for all exams No entry to the exam will be allowed 30 minutes or more after exam start time No extra time will be granted for students who arrive late
NO TALKING AND NOISE	<ul style="list-style-type: none"> No talking upon entering the exam venue No talking during the exam No talking at the completion of the exam
EQUIPMENT	<ul style="list-style-type: none"> It is the student's responsibility to bring all necessary equipment needed for each exam No borrowing is permitted in the exam venue
REMAIN SEATED	<ul style="list-style-type: none"> Students should be seated and facing the front whilst in the exam venue
LEAVING EARLY	<ul style="list-style-type: none"> Years 7 – 11 students are not permitted to leave an exam before the stated finish time
TOILETS	<ul style="list-style-type: none"> Students should visit the toilet before each exam Toilet breaks will not be granted during an exam unless a Doctor's Certificate has been supplied to the Deputy Principal prior to the exam
CHEATING	<ul style="list-style-type: none"> Any form of cheating or "non serious attempt" will result in a student receiving a zero mark for that exam
MOBILE PHONES, SMART WATCH OR DATA STORAGE DEVICES	<ul style="list-style-type: none"> Any student who is caught in the possession of a mobile phone, smart watch or data storage device in the exam venue will receive a zero MARK for that exam

CONSEQUENCES FOR BREACHING EXAM RULES:

- General warning is the final warning
- First personal warning will result in the loss of 20% of exam marks and will be noted on the exam paper
- Second personal warning will result in receiving a "zero" for that exam and will be noted on the exam paper
- No personal warnings will be issued for cheating or mobile phones.

ILLNESS AND MISADVENTURE:

Students unable to attend exam/s due to illness or misadventure should:

- Inform the school ASAP, preferably prior to the exam;
- Submit written reason for absence (such as a doctor's certificate, note from parent/care provider etc) to your class teacher on the first day back at school;
- Where no note is supplied or the reason for the absence is unacceptable (such as misreading the exam timetable, truancy or attending a non-school events) a zero will be awarded for the examination missed.

Gaining a NSW Record of Achievement (RoSA)

Records of Achievement reflect your efforts. Students who do not make a satisfactory effort will not receive a good record of achievement.

Before you can be awarded a Record of Achievement you must fulfil the following requirements:-

- 1) Satisfactorily complete courses in English, Mathematics, Science and Australian History/Geography.
- 2) Satisfactorily complete a minimum of 300 hours of PD/HEALTH/PE, a minimum of 100 hours of Music, Languages and Visual Arts, and 200 hours of Design and Technology.
- 3) Each student must attend at least 85% of the available school time. If your attendance falls below 85% (approximately 15 days per semester) and as a result you cannot satisfactorily complete courses, you will become ineligible for RoSA. Frequent absenteeism affects your level of sustained, diligence and effort towards your schooling.
- 4) You must attend school up to the last day of attendance in December as determined by the Department of Education and Training.

Satisfactory Completion of a Course

A student will be considered to have satisfactorily completed a course if, in the Principal's view, there is sufficient evidence that the student has:

- (a) **followed** the course developed or endorsed by the NSW Education Standards Authority (NESA); and
- (b) applied themselves with **diligence and sustained effort to** the set tasks and experiences provided in the course by the school (**coursework**); and
- (c) **achieved** some or all of the course outcomes.

This means that

- (a) You must attend lessons in that course for the required number of hours,
- (b) bringing the correct equipment and books.
- (c) You must make a **genuine effort** in all class activities.
- (d) You must make a **serious attempt** at all your assessment tasks.

School Examination Attendance

Examinations are compulsory assessment tasks. Year 10 students must seriously attempt the Half Yearly and Yearly Examinations at the times nominated in the Assessment Schedule and school Examination Timetables. Examinations for individual students or classes will not be rescheduled unless the Deputy Principal has granted special permission. This permission in nearly every case will need to be sought prior to the exam. This will be based upon documentation supplied to the Deputy Principal at least one week before the examination. If students are not feeling well they should do the examination and report the illness to the exam supervisor. They must also then report their illness to the Year 10 Deputy. A medical certificate should also be supplied as soon as possible after the exam and attached to an Illness/Misadventure form. "Soft" excuses such as misreading of the exam timetable, attending family holidays or non-school events will result in ZERO being awarded for the examination missed. No rescheduling of an examination or an estimate will be given for such excuses. An estimate will only be given in cases of extreme or genuine misadventure that prevents examination attendance. Applications will be viewed on a case by case basis. Wherever possible, the student will complete the examination or similar at a later date.

RoSA Assessment

Assessment will be a continuous process and it is important you complete tasks to the best of your ability. Student progress will be reported to parents and students at the end of each semester.

At the end of Year 10, grades will be awarded for each of your subjects which indicate your level of achievement.

The grade you will receive is determined by how well you meet the required outcomes of the course for each subject's assessment grid. Grades in each subject will be indicated by the letters A, B, C, D or E.

Determining RoSA Grades

As NESA stipulates that each student's grade should represent their level of achievement at the end of the course, this school will determine grades using the following guidelines:

100 Hours Course grades will be compiled from Year 10 Semester 1 marks only.

(The only exception to this is for Personal Development, Health and Physical Education (PDHPE) which will use marks from one semester of Year 9 and any marks available from the Year 10 course.)

200 Hour Course grades will be compiled from Year 10.

Dealing with Assessment Tasks

Notification of Assessment Tasks

Students will be given a minimum of one week's notice for an assessment task.

Use the school diary to organise your tasks and present them on time.

If a student participates in a special school event and this interferes with their:

- i) Attending an assessment activity OR
- ii) Meeting an assessment deadline OR
- iii) Adequately preparing for an assessment activity

the student may be eligible for special consideration in order to compensate for the loss of time. It is the student's responsibility to fill out the application for assessment variation form, and inform the Deputy and Head Teacher well in advance of any special events.

Missed Assessment Tasks

If you are absent for an assessment task, you must see the Deputy Principal for Year 10. If the assessment task is a whole year examination your teacher will direct you to see the appropriate Head Teacher for an alternate time to complete the task.

Assessment Tasks Handed in Late

Students in all instances are advised to hand work in by the due date, even if it is incomplete. If that does not happen, students need to fill out the assessment variation **form and hand it to Year 10 Deputy for approval and then to their teacher**. Late submissions will incur the following penalties:

1 day after due date = deduct 10% of marks awarded

2 days after due date= deduct 20% of marks awarded

3 days after due date= deduct 30% of marks awarded

Work not handed in after 5 days will receive zero marks, but must be still submitted.

Extensions of Time

Extensions can only be granted by the Deputy Principal responsible for Year 10. An extension will only be granted when the student can prove a case of extreme difficulty in meeting an assignment deadline. Application must be made on the assessment variation form PRIOR to the due date.

Cheating or truanting on the day/lesson a task is to be completed

If the Head Teacher is satisfied that you cheated in any assessment task or truanted on the day or period of the task, a zero mark will be awarded.

Unsatisfactory “N” Determinations

If at any time it appears that a student is at risk of receiving an “N” determination in any course, the Principal, Deputy Principal or Teacher must warn the student as soon as possible and advise the parent or guardian in writing. This warning will be given in time for the problem to be corrected.

Students who do not show improvement will be interviewed by the Deputy Principal for Year 10.

Students who have not complied with the requirements and have **received two warning letters will be regarded as not having satisfactorily completed the course.**

The principal will then apply the “N” determination if the student does not make the effort to improve.

Consequences of “N” Determinations

If a student is given an “N” determination in a course they will be required to attend an interview with the principal and parents to explain why they should be allowed to progress to Year 11. This will jeopardise their subject selection and position/selection in Year 11 classes.

SUBJECT: **ENGLISH**
Mandatory 2022
HEAD TEACHER: **Mrs K Rose**

INTRODUCTION: The Stage 5 English course is based upon students developing skills in listening, reading, writing, speaking, viewing and representing. These skills are taught and assessed through students interacting with texts in a variety of medium. Text means any communications written or spoken or visual eg. book, newspaper, film, article, advertisement, webpage, graphic, poem etc.

Students will be required to work on assessment tasks, both in class and at home.

The course consists of the following areas of study:

- | | |
|--|--------------------------------|
| 1. Texts and Context | 3. Shakespearean Appropriation |
| 2. Contemporary Storytelling – Documentary | 4. Area of Study |

ASSESSMENT SCHEDULE:

Timeframe	Task	Assessment Area	Weighting	Approximate Due Date
Term 1	Texts and Context: Speaking	Knowledge, skills and understanding	25%	Week 9, Term 1
Term 2	Contemporary Storytelling	Knowledge, skills and understanding	25%	Week 5, Term 2
Term 3	Shakespearean Appropriation- Inquiry Based Learning	Knowledge, skills and understanding	25%	Week 9, Term 3
Term 4	AOS Fear Critical Response	Knowledge, skills and understanding	25%	Term 4 Examination Period

SUBJECT: **MATHEMATICS**
Mandatory 2022
 HEAD TEACHER (Rel): **Mr C Wilson**

INTRODUCTION: The course consists of the following modules of study:

- | | |
|-----------------------|---------------------------|
| 1. Space and Geometry | 4. Data |
| 2. Number | 5. Patterns and Algebra |
| 3. Measurement | 6. Working mathematically |

ASSESSMENT SCHEDULE:

Year 10 – Stage 5.1

Mathematics

Rel. Head Teacher: Mr C Wilson

Term 1		
Topic / Theme Description	Assessment	Approx. due date
Financial Mathematics, Measurement	Financial Mathematics Exam	Week 8
Term 2		
Topics / Theme Description	Assessment	Approx. due date
Algebraic Expressions, Indices, Probability	Half Yearly Exam (Measurement, Algebraic Expressions)	Week 5
Term 3		
Topics / Theme Description	Assessment	Approx. due date
Single Variable and Bivariate Statistics, Linear Relationships, Properties of Geometric Figures	STEM Statistics Assignment	Week 4
Term 4		
Topics / Theme Description	Assessment	Approx. due date
Right Angled Triangles, Equations, Formulas and Inequalities, Non-Linear Relationships	Yearly Exam	Week 5

Note: Students may also have additional in class tests which will form part of their assessment

Year 10 – Stage 5.2

Mathematics

Rel. Head Teacher: Mr C Wilson

Term 1		
Topic / Theme Description	Assessment	Approx. due date
Financial Mathematics, Measurement, Algebraic Expressions	Measurement Exam	Week 8
Term 2		
Topics / Theme Description	Assessment	Approx. due date
Indices, Probability, Single Variable & Bivariate Statistics	Half Yearly Exam (Algebraic Expressions, Indices)	Week 5
Term 3		
Topics / Theme Description	Assessment	Approx. due date
Linear Relationships, Properties of Geometric Figures, Right Angled Triangles	STEM Statistics Assignment	Week 4
Term 4		
Topics / Theme Description	Assessment	Approx. due date
Equations, Formulas and Inequalities, Quadratic Expressions, Equations and Non-Linear Relationships	Yearly Exam	Week 5

Note: Students may also have additional in class tests which will form part of their assessment

Year 10 – Stage 5.3

Mathematics

Rel. Head Teacher: Mr C Wilson

Term 1		
Topic / Theme Description	Assessment	Approx. due date
Measurement, Indices and Surds, Probability	Indices and Surds Exam	Week 8
Term 2		
Topics / Theme Description	Assessment	Approx. due date
Single Variable and Bivariate Statistics, Expressions and Equations, Linear Relationships	Half Yearly Exam (Probability, Single Variable and Bivariate Statistics)	Week 5
Term 3		
Topics / Theme Description	Assessment	Approx. due date
Trigonometry, Quadratic Expressions and Equations	STEM Assignment	Week 4
Term 4		
Topics / Theme Description	Assessment	Approx. due date
Non-Linear Relationships, Functions and Their Graphs	Yearly Exam	Week 5

Note: Students may also have additional in class tests which will form part of their assessment

SUBJECT: **SCIENCE**
Mandatory 2022
HEAD TEACHER: **Mrs J O’Keeffe**

INTRODUCTION: The course consists of the following modules of study:

1. Chemistry
2. Physics
3. Biology
4. Geology
5. Working Scientifically

ASSESSMENT SCHEDULE:

Timeframe	Task	Assessment Area	Weighting
Term 1, Week 6	Depth Study	Working Scientifically	30%
Term 2, Week 5	Half Yearly Examination	Knowledge	20%
Term 2, Week 8	Practical Test	Working Scientifically	20%
Term 4, Week 5	Yearly Examination	Knowledge	30%

SUBJECT: AUSTRALIAN HISTORY
Mandatory 2022
HEAD TEACHER: Mr W Smith

INTRODUCTION: The knowledge and skills outcomes from this course include: Recounting major historical events in chronological order, sequencing major historical events to show understanding of continuity, change and causation.

ASSESSMENT SCHEDULE:

Timeframe	Task	Assessment Area	Weighting
Term 1	Source Analysis	Knowledge and Understanding	20%
Term 2	Research Assignment	Understanding, Skills and Research	20%
Term 3	Extended Response	Understanding, Skills and Research	20%
Term 4	Tests and Examinations	Knowledge, Understanding and Skills	40%

SUBJECT: AUSTRALIAN GEOGRAPHY – Delivered in Year 9
Mandatory 2022
HEAD TEACHER: Mr W Smith

INTRODUCTION: The assessment schedule for Geography reflects the knowledge and skills outcomes expected of Stage 5 Geography students.

ASSESSMENT SCHEDULE:

Timeframe	Task	Assessment Area	Weighting
Term 1	Assignment	Knowledge, Understanding and Skills	20%
Term 2	Research Assignment	Understanding, Skills and Research	20%
Term 3	Fieldwork	Understanding, Skills and Research	20%
Term 4	Tests and Examinations	Knowledge, Understanding and Skills	40%

SUBJECT: PERSONAL DEVELOPMENT, HEALTH AND PHYSICAL EDUCATION (PDHPE)
Mandatory 2022
HEAD TEACHER: Mr K Bassingthwaighte

INTRODUCTION: The course consists of content strands below:

- STRAND 1: Health, wellbeing and relationships
- STRAND 2: Movement skill and performance
- STRAND 3: Healthy, safe and active lifestyles

ASSESSMENT SCHEDULE:

Timeframe	Task No	Task	Assessment Area	Weighting
Overall performance in Year 9 PDHPE	1	Marks Achieved in Year 9		30%
Semester 2 Year 10	2	Assignment – “Taking Care of Me” writing task	Personal Development and Health	25%
Semester 2 Year 10	3 a, b	Movement Skill and Performance	Sport Studied	45%

Please note: In addition to the mandatory courses outlined above, there may be other compulsory co-curricular programs or activities for all Year 10 students. You will be informed of any such requirements in writing during the year.

SUBJECT: **AGRICULTURAL TECHNOLOGY**
2022
HEAD TEACHER: Mrs J O'Keeffe

INTRODUCTION: The course includes study of the following areas as integrated units:

- Investigation of agricultural industries, both plant and animal based
- Work, Health and Safety (WHS) guidelines for agricultural practices
- An understanding of environmental, sustainability, financial viability, marketing, available technologies and ethical considerations in agricultural enterprises
- The importance of agriculture systems and management for society, other industries and the economy.

ASSESSMENT SCHEDULE: 100 Hour Course – Semester 1

Timeframe	Task	Assessment Area	Weighting
Term 1	Report	Research	20%
Term 1	Practical assessment (log, practical)	Skills	30%
Term 2	Examination	Knowledge	50%

ASSESSMENT SCHEDULE: 100 Hour Course – Semester 2

Timeframe	Task	Assessment Area	Weighting
Term 3	Research Task	Knowledge/practical	20%
Term 3	Practical Assessment	Skills	30%
Term 4	Examination	Knowledge	50%

ASSESSMENT SCHEDULE: 200 Hour Course

Timeframe	Task	Assessment Area	Weighting
Term 1	Report	Research	10%
Term 1	Practical assessment (log, practical.)	Skills	20%
Term 2	Half Yearly Examination	Knowledge	20%
Term 3	Research Task	Knowledge/practical	35%
Term 4	Yearly Examination	Knowledge	15%

SUBJECT: **COMMERCE**
 2022
 HEAD TEACHER: Mr W Smith

INTRODUCTION: This course includes the following modules of study:

1. Overview of Consumers/Business/Government
2. Law
3. Buying a Car
4. Moving Out
5. Making a Will
6. Choosing a Career
7. Applying for Employment
8. Income Tax

ASSESSMENT SCHEDULE: 100 Hour Course

Timeframe	Task	Assessment Area	Weighting
Term 1	Research Assignment	Knowledge, research and Understanding	50%
Term 2	Exam	Knowledge, Understanding and Skills	50%

ASSESSMENT SCHEDULE: 200 Hour Course

Timeframe	Task	Assessment Area	Weighting
Term 1	Research Assignment	Knowledge, research and Understanding	25%
Term 2	Exam	Knowledge, Understanding and Skills	25%
Term 3	Research Assignment	Knowledge, research and Understanding	25%
Term 4	Tests and Examinations	Knowledge, Understanding and Skills	25%

SUBJECT: **DANCE**
 2022
 HEAD TEACHER: Mrs N McPherson

INTRODUCTION: The course consists of the following modules of study:

1. Performance
2. Composition
3. Appreciation

ASSESSMENT SCHEDULE:

Semester 1
100 Hour Course

Unit	Component	Task Due	Weighting
Arts As Stimulus	Composition	Term 1, Week 4	15%
Musical Theatre	Performance Appreciation	Term 1, Week 9	40%
Choreographic Forms	Performance Composition	Term 2, Week 5	45%

Semester 2

Unit	Component	Task Due	Weighting
Pioneers of Modern Dance	Performance / Appreciation	Term 3, Week 8	25%
Unpacking Alignment	Performance/Appreciation	Term 4, Week 3	10%
Constructing a Composition Work	Composition	Term 4, Week 6	15%

SUBJECT: **DRAMA**
2022

HEAD TEACHER: Mrs N McPherson

INTRODUCTION: The course consists of the following modules of study:

- | | |
|---------------------------------------|-------------------------|
| 1. Improvisation and Physical Theatre | 5. Scripted Performance |
| 2. Commedia Dell'Arte | 6. Playbuilding |
| 3. Duologues | |
| 4. Production Elements | |

Drama Assessment Tasks

Please note: the timing of the following assessment tasks is approximate and may change without notification. Students will be notified in writing of the requirements and timing of all assessment tasks events in advance of the due date.

Semester 1 100 Hour Course

Topic	Task	Due Date	Weighting
Improvisation and Physical Theatre	Group Performance Logbook and peer reflection	Term 1, Week 10	50%
Playbuilding	Dramaturg Research Project	Term 2, Week 4	25%
Playbuilding Performance	Group Devised Performance (Performance and Logbook)	Term 2, Week 7	25%

Semester 2 200 Hour Course

Topic	Task	Due Date	Weighting
Performance Text – Production Elements Project	Research Task and Design Portfolio	Term 3, Week 8	50%
Performance Text – Performance	Performance Task (Performance and Logbook)	Term 4, Week 7	50%

SUBJECT: **FOOD TECHNOLOGY**
 2022
 HEAD TEACHER: Mrs S Cowell

INTRODUCTION: The course consists of the following modules of study:

- Food product development
- Food Selection and Health

The 200 hour course has the following additional modules:

- Food Trends
- Food for Special Occasions

ASSESSMENT SCHEDULE: 100 Hour Course

Timeframe	Task	Assessment Area	Weighting
Term 1	Design Folio / Practical	Food Product Development	30%
Term 2	Practical / Research	Food Selection and Health	40%
Term 2	Unit Test	All Work	30%

ASSESSMENT SCHEDULE: 200 Hour Course

Timeframe	Task	Assessment Area	Weighting
Term 1	Design Folio / Practical	Food Product Development	30%
Term 2	Practical	Food Selection and Health	20%
Term 2	Unit Test	All Work	15%
Term 3	Research / Practical	Food Trends	15%
Term 4	Research / Practical	Food for Special Occasions	20%
Term 4	Unit Test		

SUBJECT: **GLOBAL STUDIES**
2022
HEAD TEACHER: Mr W Smith

INTRODUCTION: This course includes the following modules of study:

1. Australia's Neighbours
2. Political and Developmental Geography

ASSESSMENT SCHEDULE: 100 Hour Course

Timeframe	Task	Assessment Area	Weighting
Term 1	Research Assignment	Knowledge, research and Understanding	50%
Term 2	Exam	Knowledge, Understanding and Skills	50%

SUBJECT: INDUSTRIAL TECHNOLOGY
2022
METAL / TIMBER / ENGINEERING

HEAD TEACHER: Mr M Wiggins

INTRODUCTION: The course consists of the following modules of study:

1. Workplace Safety
2. Project Folio – Project design, management and communication (Drawing/Planning/Documenting)
3. Practical Project

ASSESSMENT SCHEDULE: 100 Hour Course

Timeframe	Task	Outcomes	Assessment Area	Weighting
Terms 1 and 2	Digital Project Folio – Design folio documenting material and construction research, project planning, design sketching, working drawings/solution, finance plan, testing and evaluating	IND5-2, IND5-4, IND5-5	Design, management and communication	20%
Term 1 Weeks 8 / 9	Research Assignment	IND5-10	Knowledge and communication	20%
Terms 1 and 2	Practical Work	IND5-1, ND5-3, IND5-6	Practical skills and WHS practices	40%
Term 2 Week 5	Exam	IND5-7	Knowledge	20%

ASSESSMENT SCHEDULE: 200 Hour Course

Timeframe	Task	Outcomes	Assessment Area	Weighting
Terms 1 - 4	Project Folios – Design folio documenting material and construction research, project planning, design sketching, working drawings/solution, finance plan, testing and evaluating	IND5-2, IND5-4, IND5-5	Design, management and communication	20%
Terms 1 and 3	Research Assignments	IND5-10	Knowledge and communication	20%
Terms 1 - 4	Practical Work	IND5-1, ND5-3, IND5-6	Practical skills and WHS practices	40%
Terms 2 and 4	Exams	IND5-7	Knowledge	20%

SUBJECT: **INTERNATIONAL STUDIES**
2022
HEAD TEACHER: Mr W Smith

This course was formerly known as Social Studies

INTRODUCTION: This course consists of the following modules of study:

1. Core module. Understanding culture and diversity in today's world.
2. Cultural tourism
3. Culture and sport
4. Coming to Australia

ASSESSMENT SCHEDULE: 100 Hour Course

Timeframe	Task	Assessment Area	Weighting
Term 1	Research Assignment	Knowledge and Skills	50%
Term 2	Examination	Knowledge, Skills and Understanding	50%

SUBJECT: **MARINE TECHNOLOGY**
2022
HEAD TEACHER: Mrs J O'Keeffe

INTRODUCTION: The course consists of the following areas of study: water safety, first aid, snorkelling, fish and estuaries, oceans, coastlines, mangroves and rock platforms, marine plants and animals, management and employment.

ASSESSMENT SCHEDULE: 100 Hour Course – Semester 1

Approximate Timeframe	Task	Assessment Area	Weighting
Term 1, Week 11	Practical Skills	Swimming / Snorkelling	15%
Term 1, Week 8	Report	Research	25%
Term 2, Week 4	Field Study	Practical	25%
Term 2, Week 6	Examination	Knowledge	35%

ASSESSMENT SCHEDULE: 100 Hour Course – Semester 2

Timeframe	Task	Assessment Area	Weighting
Term 3, Week 8	Report	Research	40%
Term 3, Week 10	Practical Skills	Swimming / Snorkelling	20%
Term 4, Week 5	Examination	Knowledge	40%

ASSESSMENT SCHEDULE: 200 Hour Course

Timeframe	Task	Assessment Area	Weighting
Term 1, Week 11	Practical Skills	Swimming / Snorkelling	10%
Term 1, Week 8	Report	Research	10%
Term 2, Week 4	Field Study	Practical	20%
Term 2, Week 6	Examination	Knowledge	20%
Term 3, Week 8	Report	Research	10%
Term 3, Week 10	Practical Skills	Swimming / Snorkelling	10%
Term 4, Week 5	Yearly Examination	Knowledge	20%

SUBJECT: **MULTIMEDIA TECHNOLOGY**
 2022
 HEAD TEACHER: Mr M Wiggins

INTRODUCTION: The course consists of the following modules of study:

1. Workplace Safety
2. Website Design Project
3. Application Design Project
4. Digital Photography
5. Movie Creation/ Editing
6. Animation
7. Game Development

ASSESSMENT SCHEDULE: 100 Hour Course

Timeframe	Task	Assessment Area	Weighting
Term 1, Week 6	Animation Research Task	Knowledge and Understanding	15%
Term 1, Week 8	Animation Practical Skills Portfolio	Practical Skills / Project	35%
Term 2, Week 6	Video Project Planning Folio	Project and design, management and communication.	20%
Term 2, Week 6	Group Video Production and Editing Project	Practical Skills / Project	30%

SUBJECT: **MUSIC**
2022
HEAD TEACHER: Mrs N McPherson

INTRODUCTION: The course consists of the following modules of study:

1. Performing
2. Composing
3. Listening

ASSESSMENT SCHEDULE:

Semester 1
100 Hour Course

Task Number	Task Description	Topic	Syllabus Outcomes	Weighting	Due Date
1	Performance	Music for Small Ensembles	5.1, 5.2	25%	Term 1, Week 6
2	Performance	Rock Music	5.2, 5.3	25%	Term 2, Week 4
3	Theory Test Topic / Listening and Composition	Rock Music / Music for Small Ensembles	5.7, 5.8, 5.9, 5.10	30% (theory / aural) 20% (comp)	Term 2, Week 6

Semester 2
200 Hour Course

Task Number	Task Description	Topic	Syllabus Outcomes	Weighting	Due Date
1	Performance	Music for Small Ensembles	5.1, 5.2	15%	Term 1 Week 6
2	Performance	Rock Music	5.2, 5.3	15%	Term 2, Week 4
3	Theory Test Topic / Listening and Composition	Rock Music / Music for Small Ensembles	5.7, 5.8, 5.9, 5.10	15% (theory / aural) 5% (comp)	Term 2, Week 6
4	Performance	Music of A Culture	5.1, 5.2, 5.3	25%	Term 3, Week 7
5	Theory Test Topic / Listening	Music of A Culture	5.7, 5.8, 5.8, 5.10	25%	Term 3, Week 9

SUBJECT: PHOTOGRAPHIC AND DIGITAL MEDIA
2022

HEAD TEACHER: Mrs N McPherson

INTRODUCTION: The course consists of the following modules of study:

1. Photographic and Digital Imaging Skills
2. Computing Skills
3. Critical/Historical Study

ASSESSMENT SCHEDULE: 100 Hour Course

	Components (syllabus)	Weighting	Task 1 Term 1 Week 10	Task 2 Term 2 Week 7	Task 3 Term 2 Week 7
5.1 – 5.6	Artmaking	35%	Portfolio of Images		
5.7 – 5.10	Art Criticism / Art History	30%		Critical / Historical Investigation	
5.7 – 5.10	Artmaking	35%			Portfolio of Images
		100%			

ASSESSMENT SCHEDULE: 200 Hour Course

	Components (syllabus)	Weighting	Task 7 Term 3 Week 7	Task 8 Term 4 Week 7
5.7 – 5.10	Art Criticism / Art History	30%	Critical / Historical Investigation	
5.7 – 5.10	Artmaking	70%		Final Body of Work
		100%		

SUBJECT: **PHYSICAL ACTIVITY AND SPORT STUDIES (PASS)**
 2022
 HEAD TEACHER: Mr K Bassingthwaighte

The following modules are studied:

Movement Skill and Performance Units

1. Ultimate Frisbee
2. Modified Grid Iron
3. Australian Rules Football
4. European Handball
5. Sofcrosse
6. Indoor hockey
7. Badminton
8. Lifestyle and recreation games – KUBB, Finska, Bocce, Croquet, Archery, Golf

Theory Units

1. Sport Coaching
2. Event Management – Athletics carnivals, sports competitions

ASSESSMENT SCHEDULE:

100 Hour Course and Semester 1

Timeframe	Task No	Task	Assessment Area	Weighting
Semester 1	1	In class athletics event CLC Primary School Carnivals	Practical skills and theory component	40%
	2 a, b, c	Movement Skill and Performance 3 of the following 4: Sofcrosse, indoor hockey, AFL, Modified Grid Iron	Practical skills component	60%

Semester 2

Timeframe	Task No	Task	Assessment Area	Weighting
Semester 2	1,2	Event Management – Competitions (PBL)	Practical skills and theory component	50%
	3 a, b	Movement Skill and Performance Two of the following three: Handball, badminton, ultimate	Practical skills component	50%

ASSESSMENT SCHEDULE: 200 Hour Course

Timeframe	Task	Assessment Area	Weighting
Semester 1	In class athletics event / CLC Athletics Carnivals	Practical skills and theory component	50%
Semester 2	Event Management, Movement Skill and Performance	Practical skills and theory component	50%

SUBJECT: **VISUAL ARTS**
 2022
 HEAD TEACHER: Mrs N McPherson

INTRODUCTION: The course consists of the following modules of study:

1. Historical study of works
2. Critical study of works

ASSESSMENT SCHEDULE: 100 Hour Course

	Components (syllabus)	Weighting	Task 1 Term 1 Week 10	Task 2 / 3 Term 2 Week 6
5.7 – 5.10	Art Criticism / Art History	30%		Research Task
	Artemaking	20%	VAPD	
5.1 – 5.6	Artemaking	50%		Body of Work
		100%		

ASSESSMENT SCHEDULE: 200 Hour Course

	Components (syllabus)	Weighting	Task 3 / 4 Term 4 Week 7
5.7 – 5.10	Art Criticism / Art History	30%	Research Task
5.1 – 5.6	Artemaking	70%	Final Body of Work VAPD
		100%	

SUBJECT: **VISUAL DESIGN**
2022
HEAD TEACHER: Mrs N McPherson

INTRODUCTION: The course consists of the following modules of study:

1. Three dimensional forms
2. Two dimensional forms
3. Design Process documentation

Topic / Theme Description	Assessment	Approx. due date
<p>Synectics of Design An investigation of creativity in design</p>	<p>Art Making (70%)</p> <ul style="list-style-type: none"> • Experimental drawings • Experiments in design synectics. • Experiments in creativity 	<p>On going during class. Tasks submitted between Weeks 5 - 10</p>
<p>Develop knowledge, understanding and skills to critically and historically interpret art informed by their understanding of practice, the conceptual framework and the frames</p>	<p>Critical and Historical Studies (30%) Artist studies William Morris, Abram Games, Niklaus Troxler, A Cassandre</p>	<p>Ongoing during class</p>

SUBJECT: **CHILD STUDIES**
2022
HEAD TEACHER: Mr K Bassingthwaighte

ASSESSMENT SCHEDULE: 100 Hour Course

Topics / Theme Description	Assessment	Approx due date
Unit 1 IPL Toddler entertaining	Project based Learning for Unit 1: Toddler entertaining Written record of life of the project (20%) Create an original activity (40%) Activity presentation (40%)	Term 1
Unit 2 Culture and children		
Equipment required: Book and pen		

200 Hour course

Topics / Theme Description	Assessment	Approx due date
Unit 1 IPL Toddler entertaining	Project based Learning for Unit 1: Toddler entertaining Written record of life of the project (20%) Create an original activity (40%) Activity presentation (40%)	Term 1
Unit 2 Culture and children		
Unit 3: Careers involving Children	Project based Learning for Unit 3: Careers involving Children Written record of life of the project (20%) Create an information stand for a specific career that works with children. (50%) Reflect on what you would need to do to prepare for the specific career you have chosen (30%)	Term 3
Unit 4: Feeding little ones		
Unit 5: Safety		
Unit 6: Every child is different		
Equipment required: Book and pen		

SUBJECT: **WORK EDUCATION**
 2022
 HEAD TEACHER: Mr W Smith

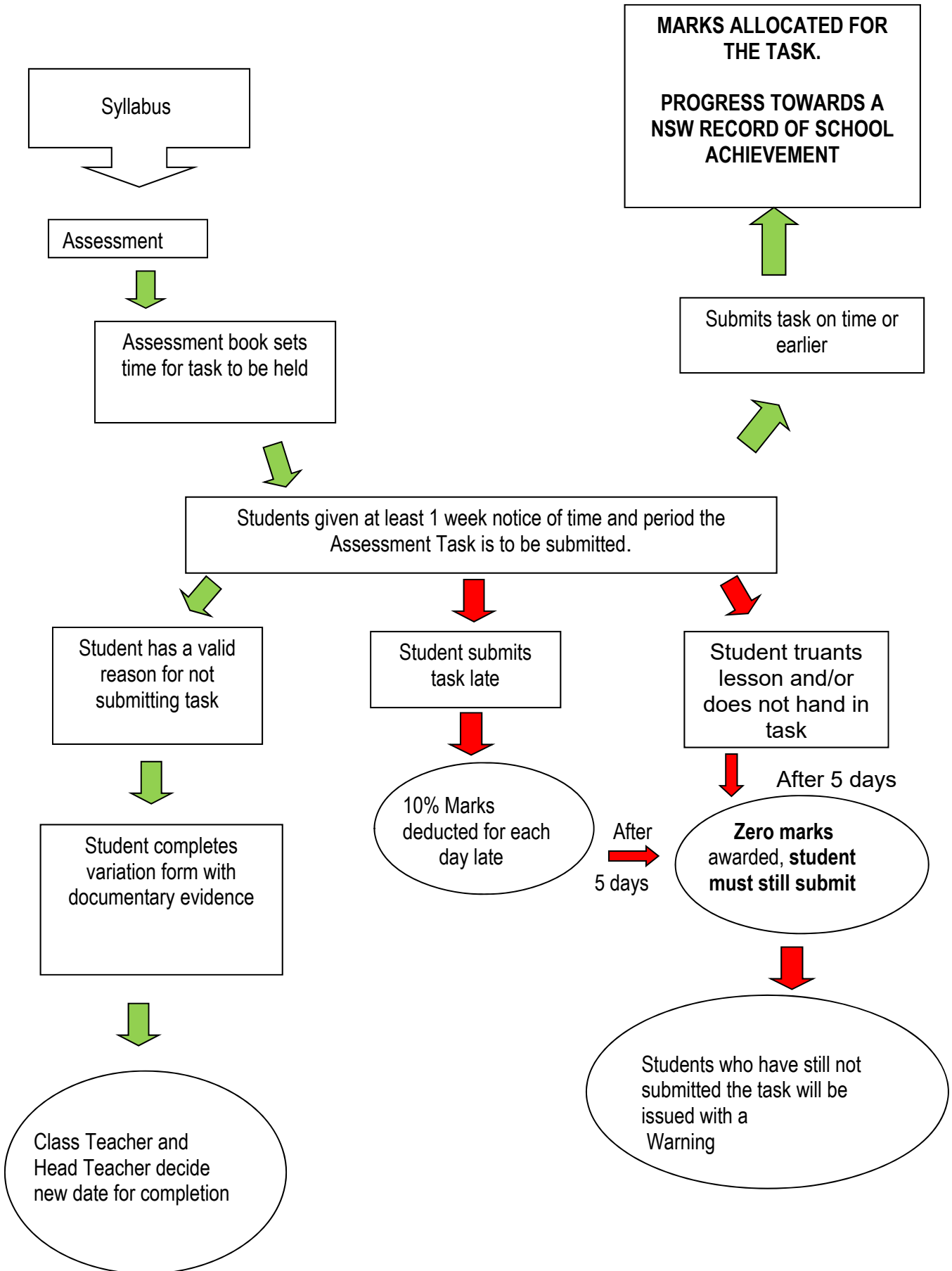
INTRODUCTION: The course consists of the following modules of study:

1. The world at work
2. Planning for a working life
3. Workplace
4. Work Portfolio

ASSESSMENT SCHEDULE: 100 Hour Course

Timeframe	Task	Assessment Area	Weighting
Term 1	Career choice portfolio	Knowledge and Understanding	30%
Term 1	Workplace safety presentation	Knowledge and Understanding	20%
Term 2	Work Experience Diary	Knowledge, Understanding and Skills	30%
Term 2	Work Experience Employer Report	Knowledge, Understanding and Skills	20%

ASSESSMENT TASK FLOWCHART





ASSESSMENT RE-SCHEDULE SHEET

(to be given to Deputy Principal Year 10)

Name: _____

Roll Call Class: _____

Exams Missed: _____

Reason: _____

Parent/Carer Signature: _____

Phone number of Parent/Carer: _____